

Fuels Reduction and Forest Restoration Planning & Prioritization

Connecting stakeholders with information and tools necessary to plan, implement and monitor fuels reduction and forest restoration at a region scale

Challenge:

A key constraint to effective and comprehensive forest management and project prioritization is the lack of accessible information and data to support collaborative and science-based decision-making.

Project Goal:

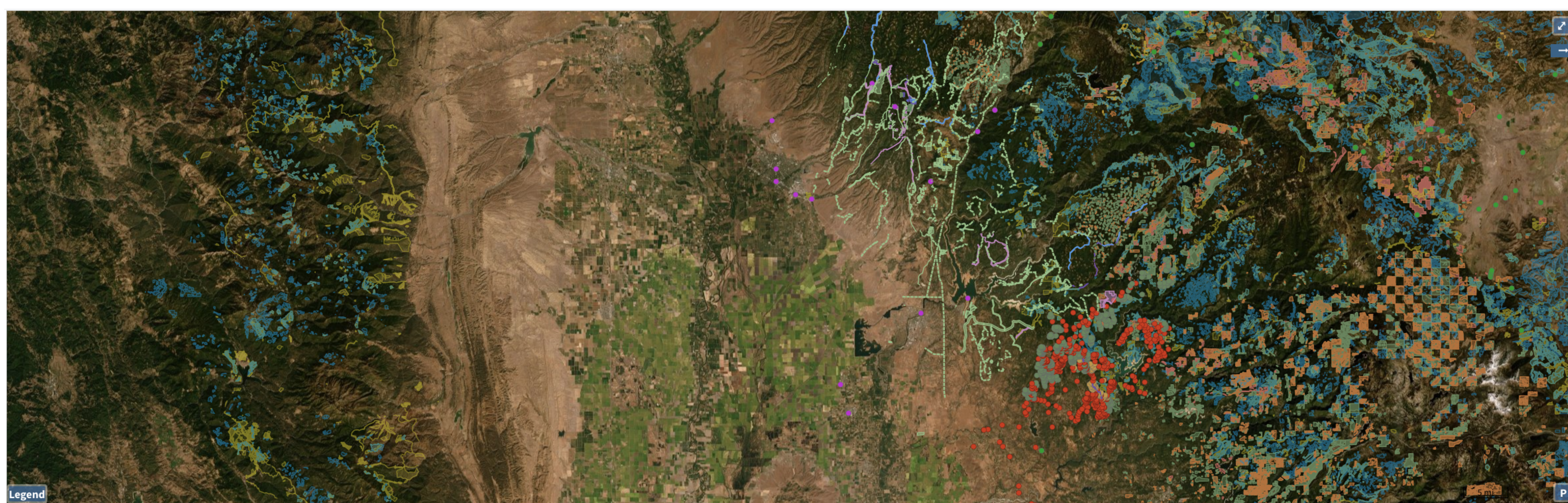
In collaboration with local stakeholder groups, this project works to develop a countywide planning process and decision support platform to help plan, implement, prioritize, monitor and publicly communicate fuels reduction, forest restoration and recovery efforts in Butte County.

Butte County

Butte County is located on the eastern side of the Sacramento River Watershed, encompasses over 1.1 million acres, and is home to more than 220,000 people. The foothills and mountainous region of the County are scattered with homes and communities intermixed amongst woodland fuels creating a serious WUI problem. In these areas, wildland fire once burned only vegetation but now burns homes as well.

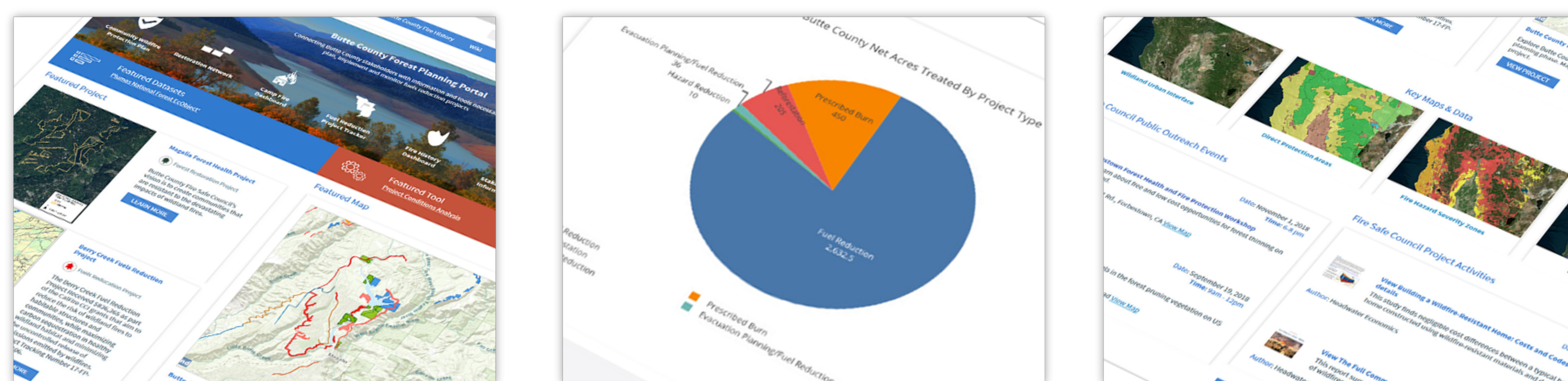
Project Highlights:

- ✓ Data Aggregation and Centralization
- ✓ Data Organization and Presentation to Stakeholders
- ✓ Capture and Retain Local Knowledge
- ✓ Collaborative Planning and Project Area Assessment
- ✓ Project Prioritization
- ✓ Project Management and Tracking
- ✓ Project Implementation Support
- ✓ Permitting Support
- ✓ Grant Writing Data Collection
- ✓ Project Monitoring
- ✓ Public Outreach and Communication



Planning for Fuels Reduction and Forest Health Projects to Reduce Risk of Wildfire

Deciding where to spend limited resources is a major challenge for our local communities. The extent of degraded forest conditions and the costs associated with making improvements is so significant and expensive that local communities will need to develop a clear plan for prioritizing uses of funding to maximize benefits. Integrated planning is necessary to leverage limited resources and maximize results.



This project supports local communities tasked with this challenge by collecting, organizing and communicating data and information so that it is available for collaborative planning activity, goal development, current and future conditions assessment, prioritization and project tracking. The decision support tool combined with a comprehensive data program improves collaboration, prioritization and public outreach, the key elements of landscape level fire prevention planning and implementation.

The project advances the countywide community effort to develop a strategic planning process by making data available as a web-based platform with interactive maps, and decision support tools to enhance collaborative engagement, strategically implement fuels reduction and fire management projects, and provide data, information, and tools to inform landscape level planning and fire prevention efforts throughout the County.

Collaborators:

